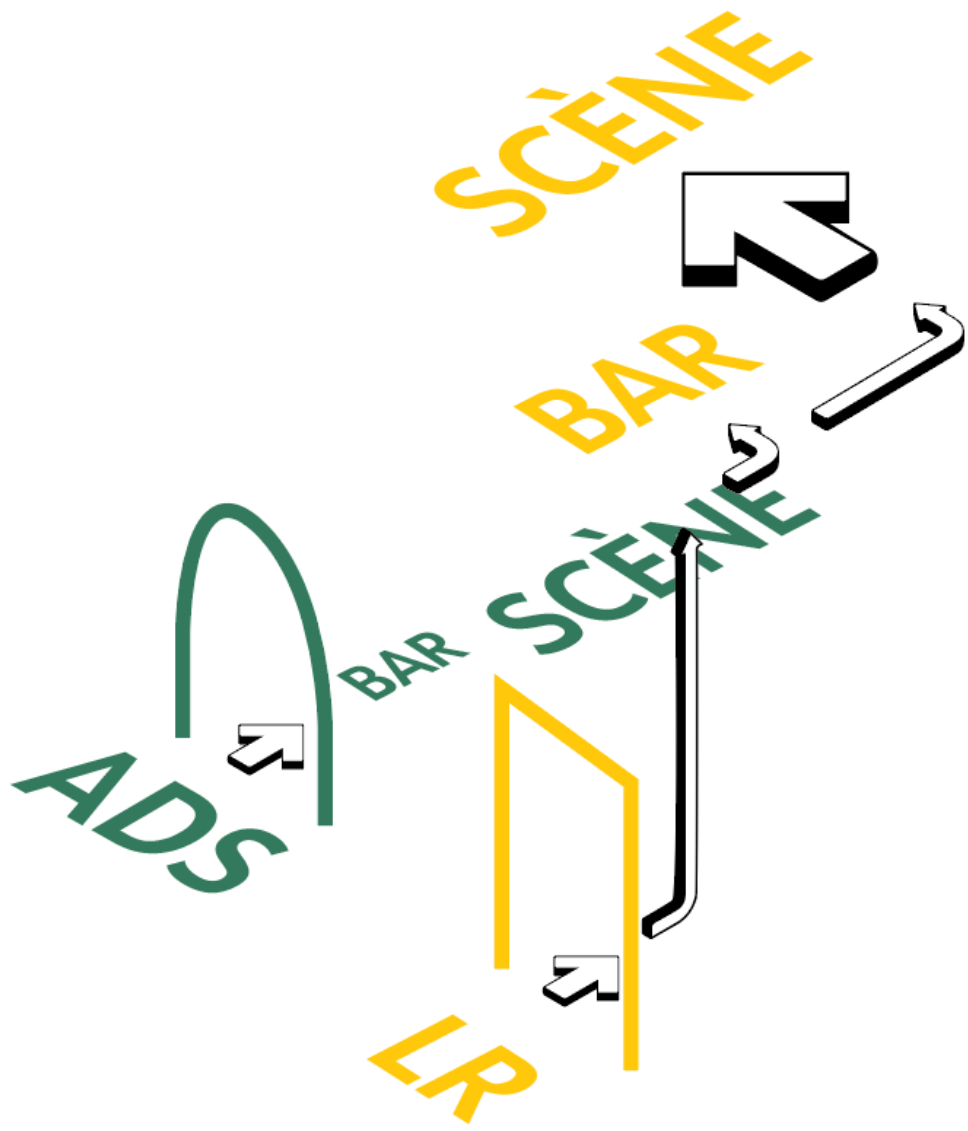


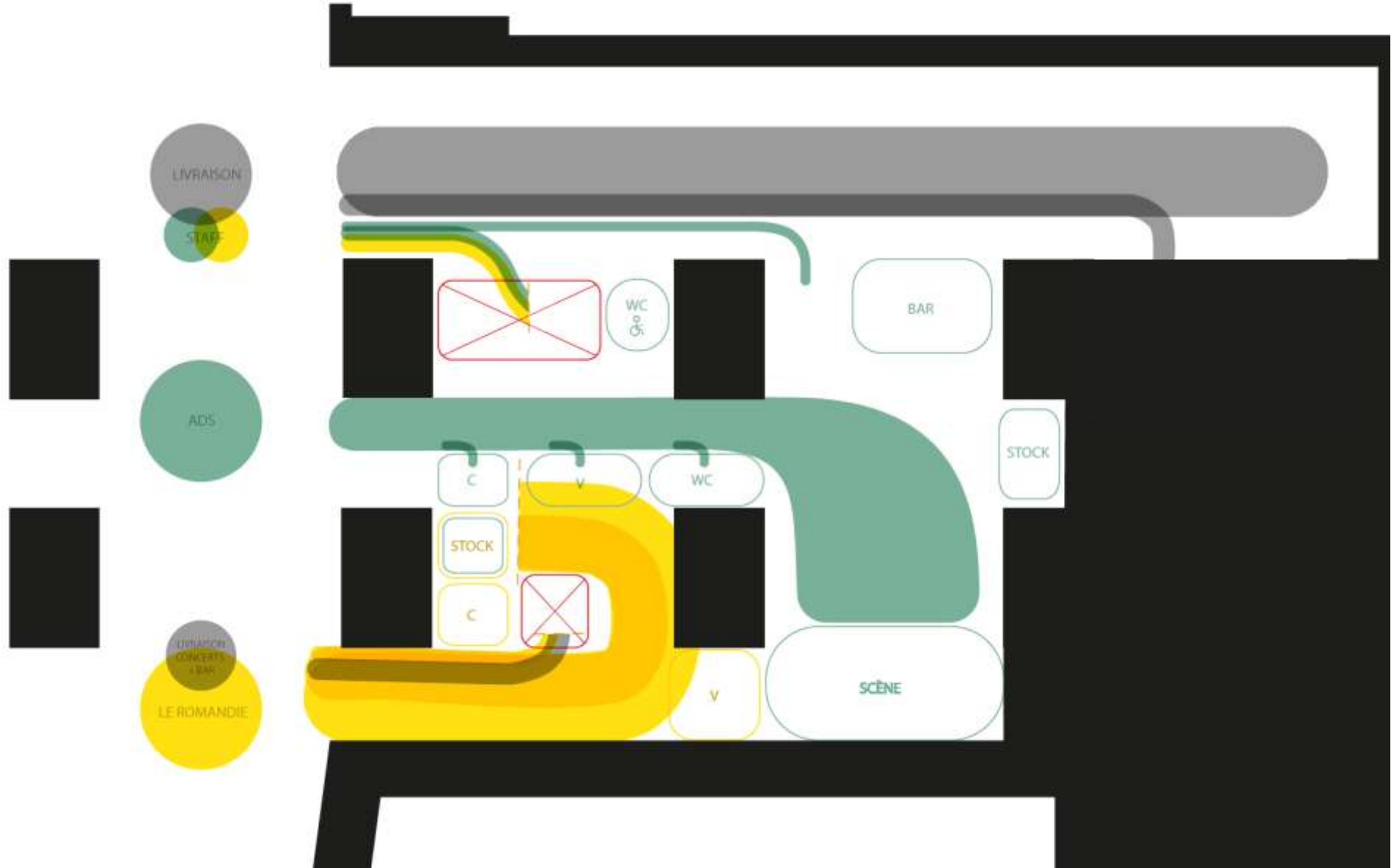
ARCHES DU GRAND-PONT  
Le Romandie - Le  
Salopard

26.11.2021 - Etude de faisabilité

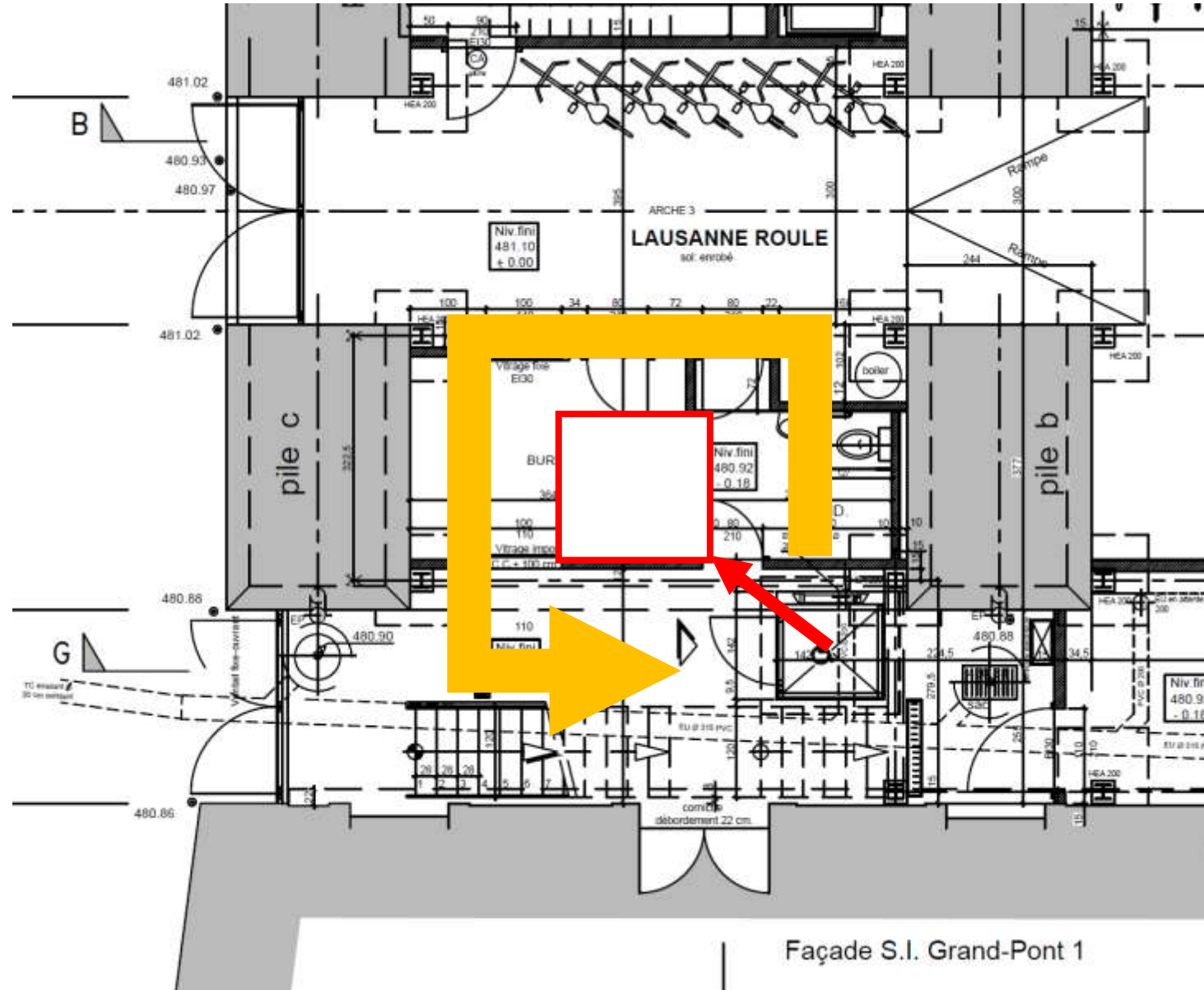
# FLUX



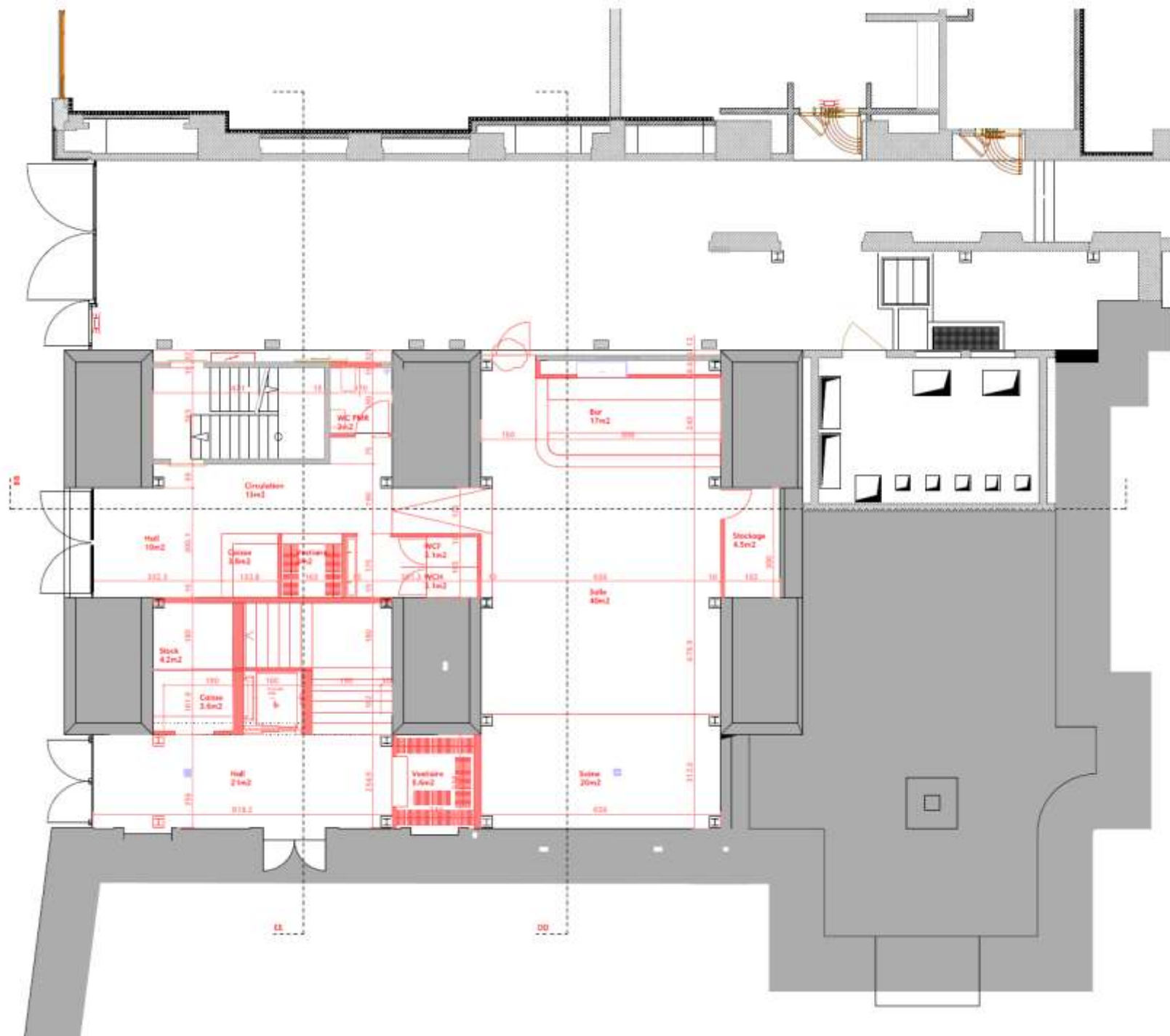
# FLUX - RDC



# FLUX - RDC



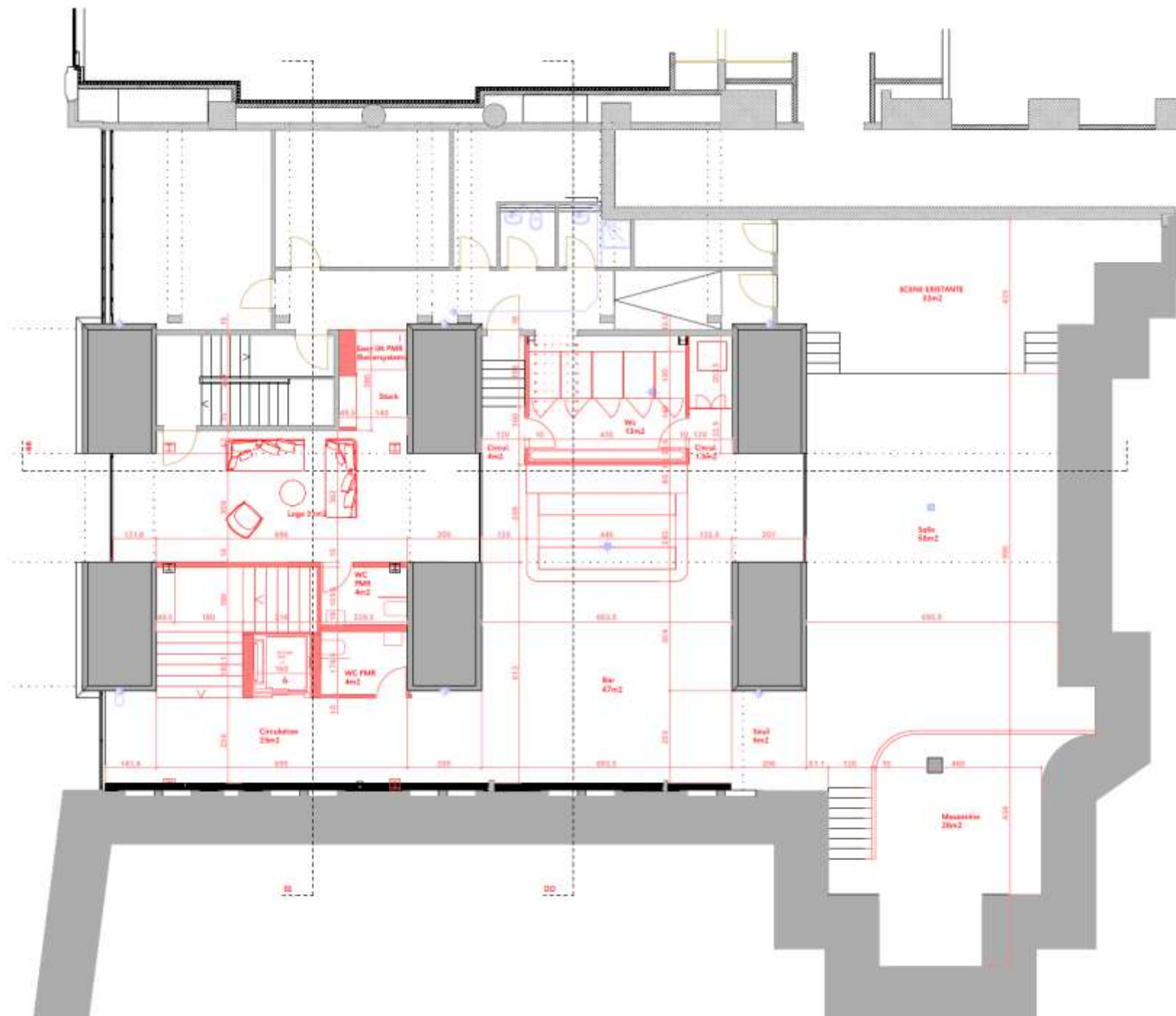
# PLAN RDC



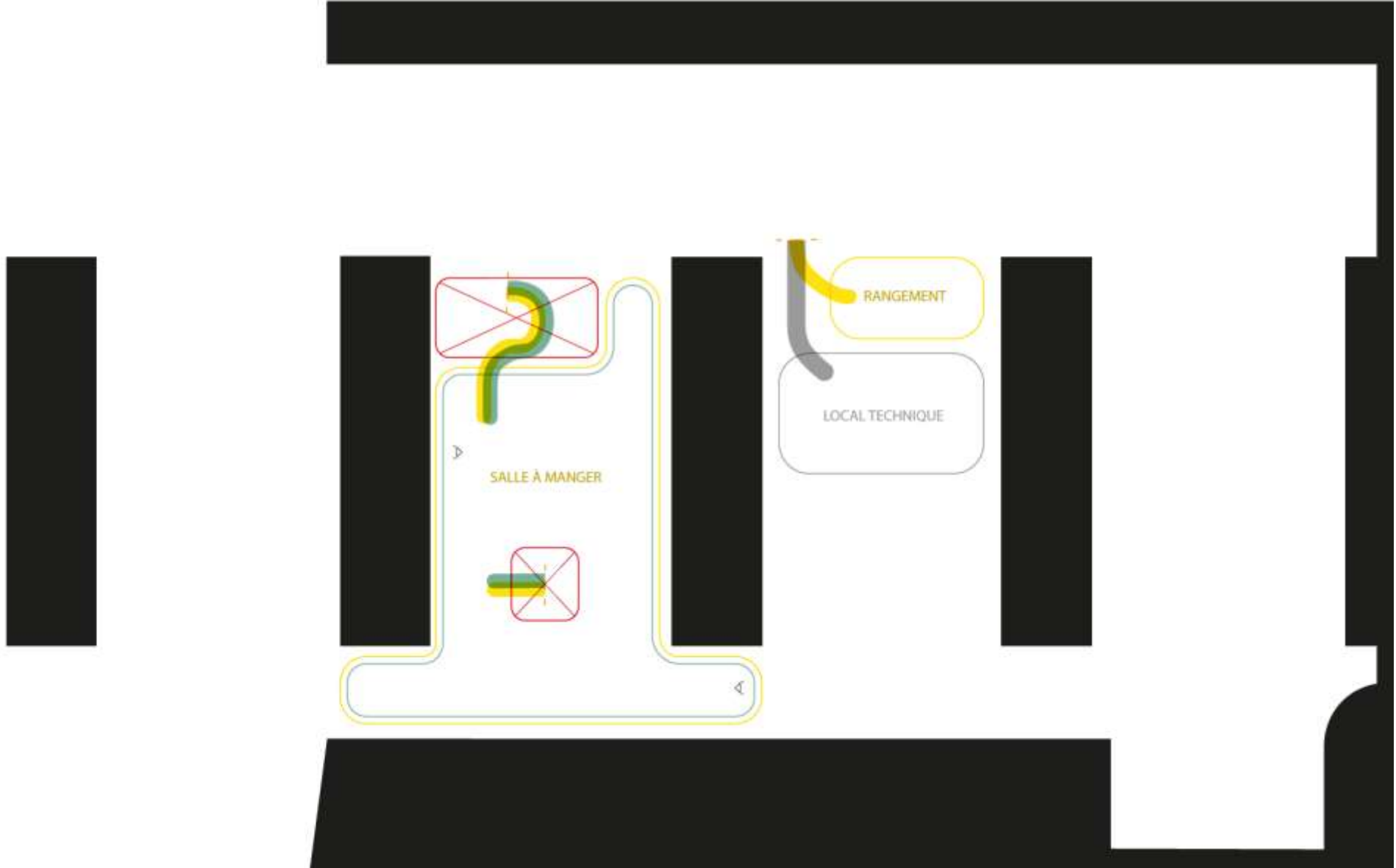
# FLUX - R+1



# PLAN R+1

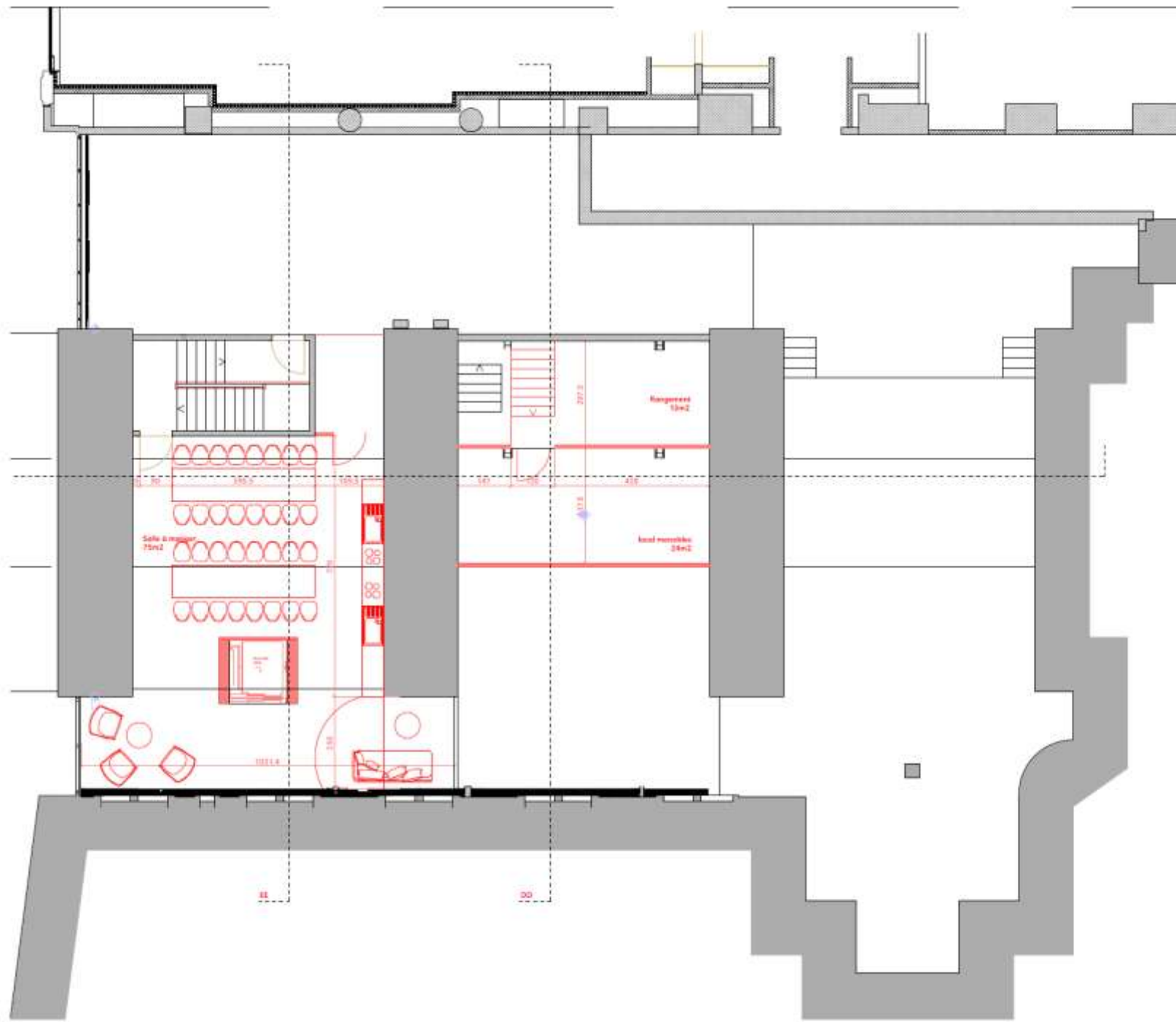


# FLUX - R+2

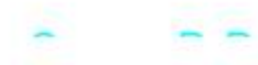
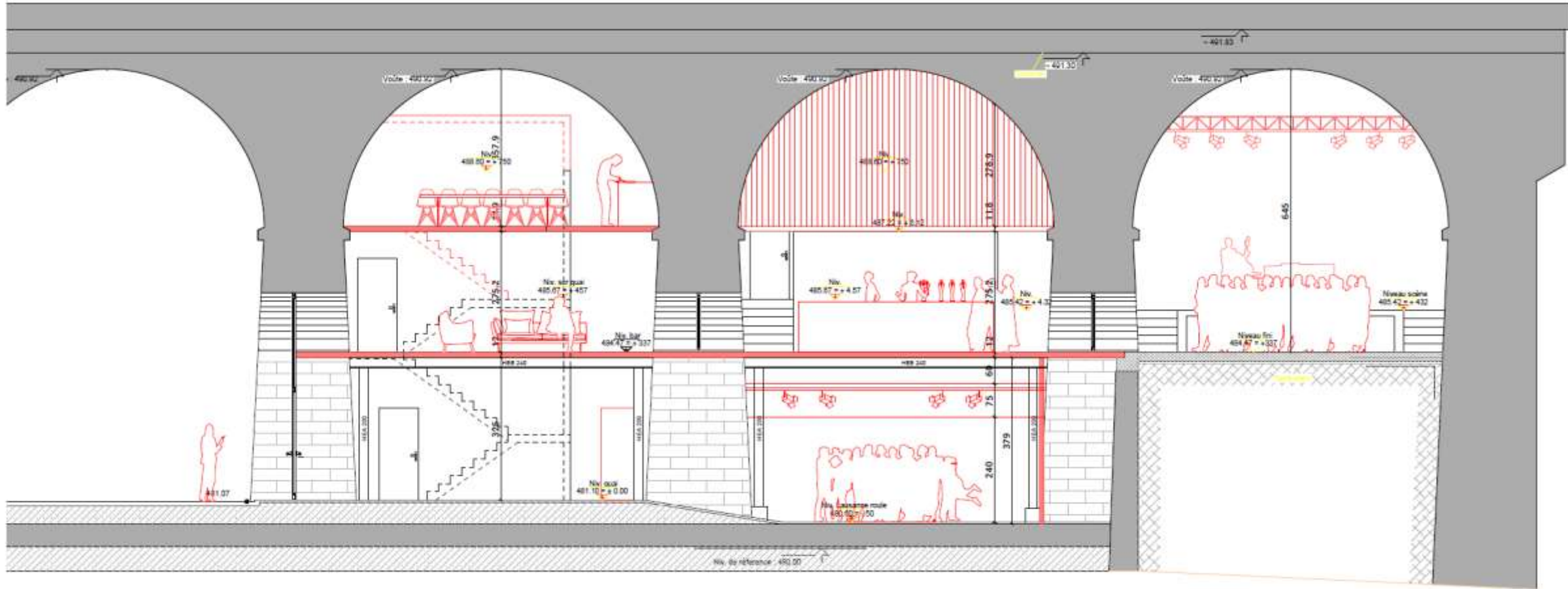




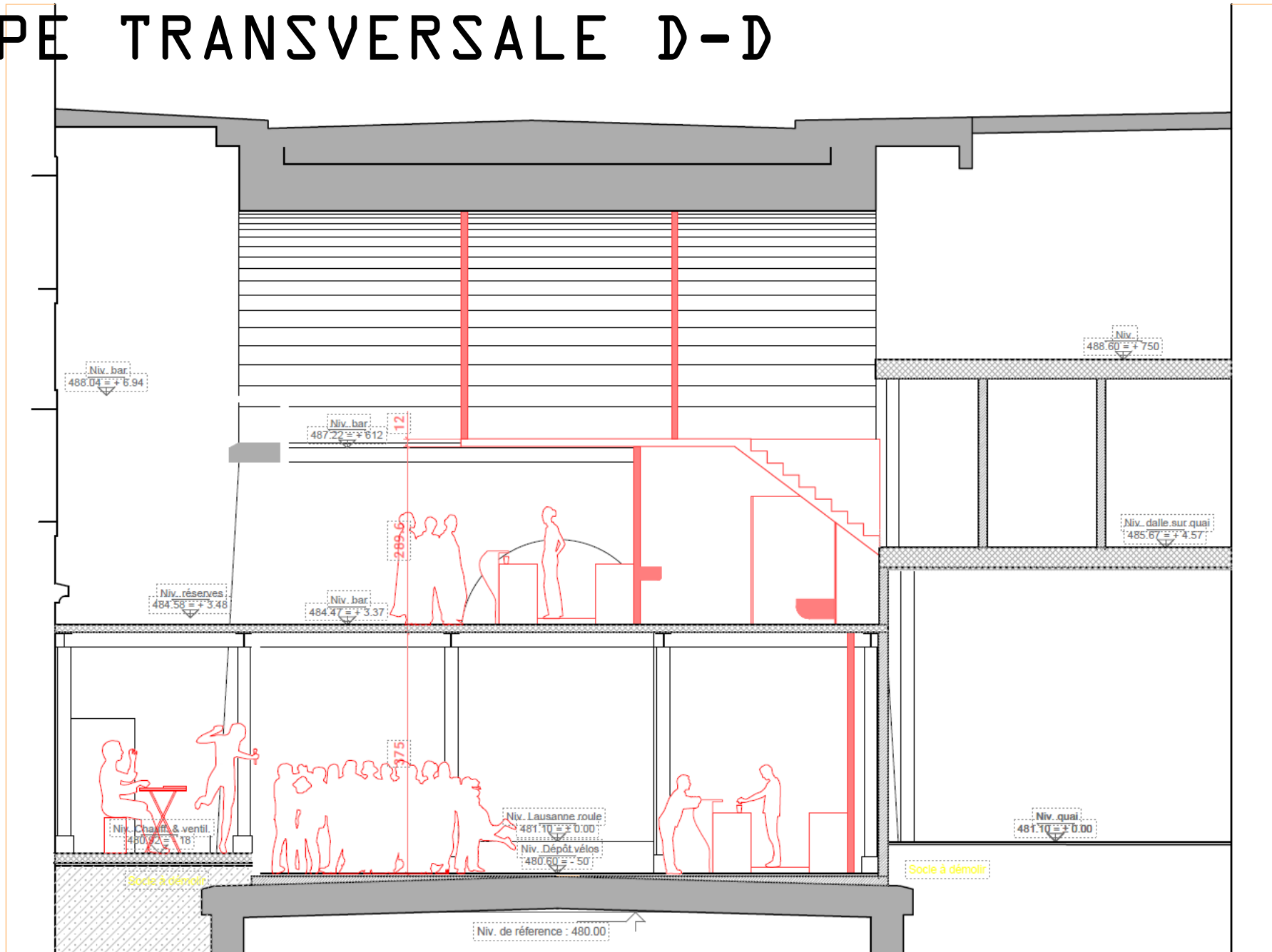
# PLAN R+2



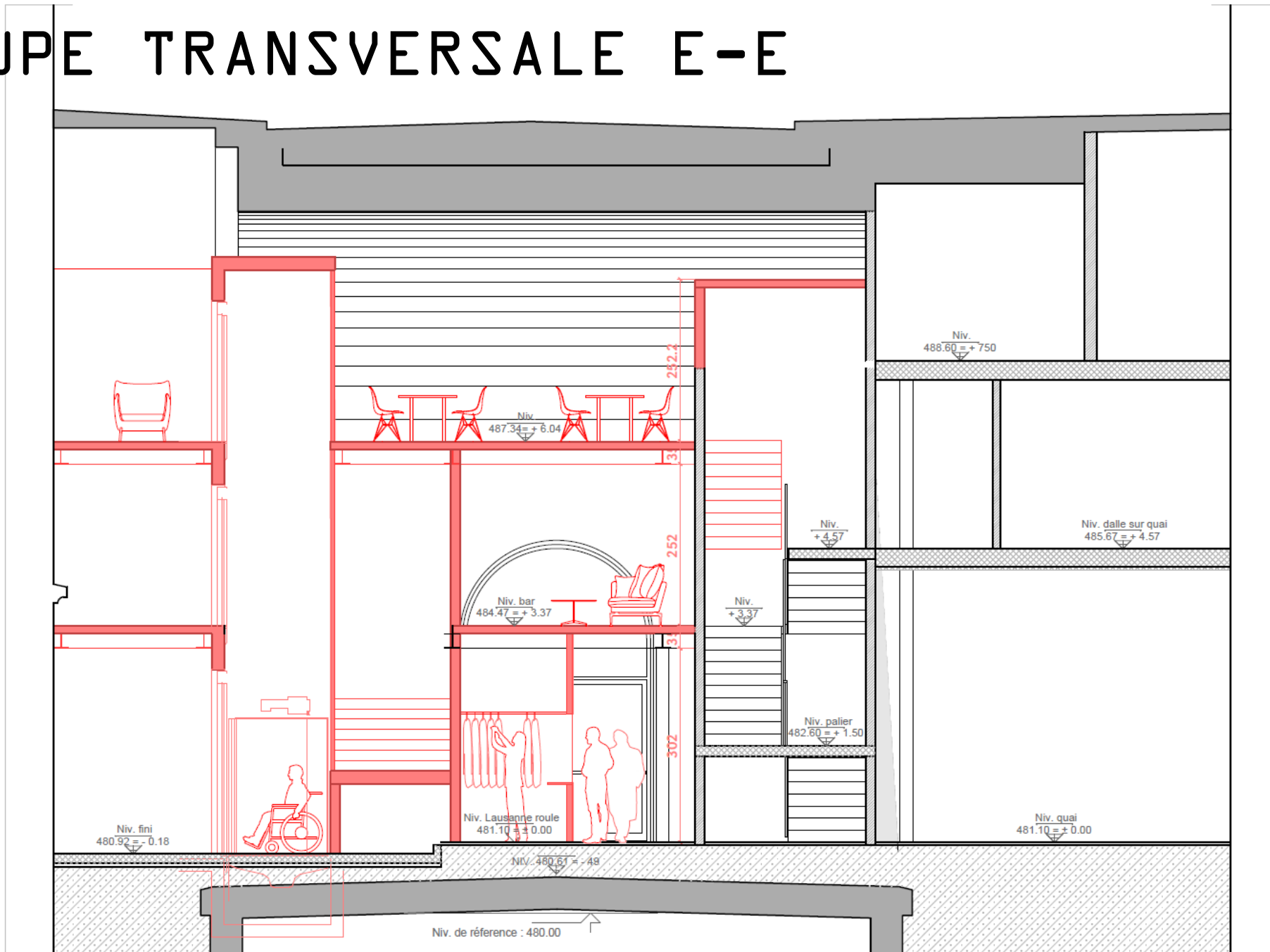
# COUPE LONGITUDINALE B-B



# COUPE TRANSVERSALE D-D

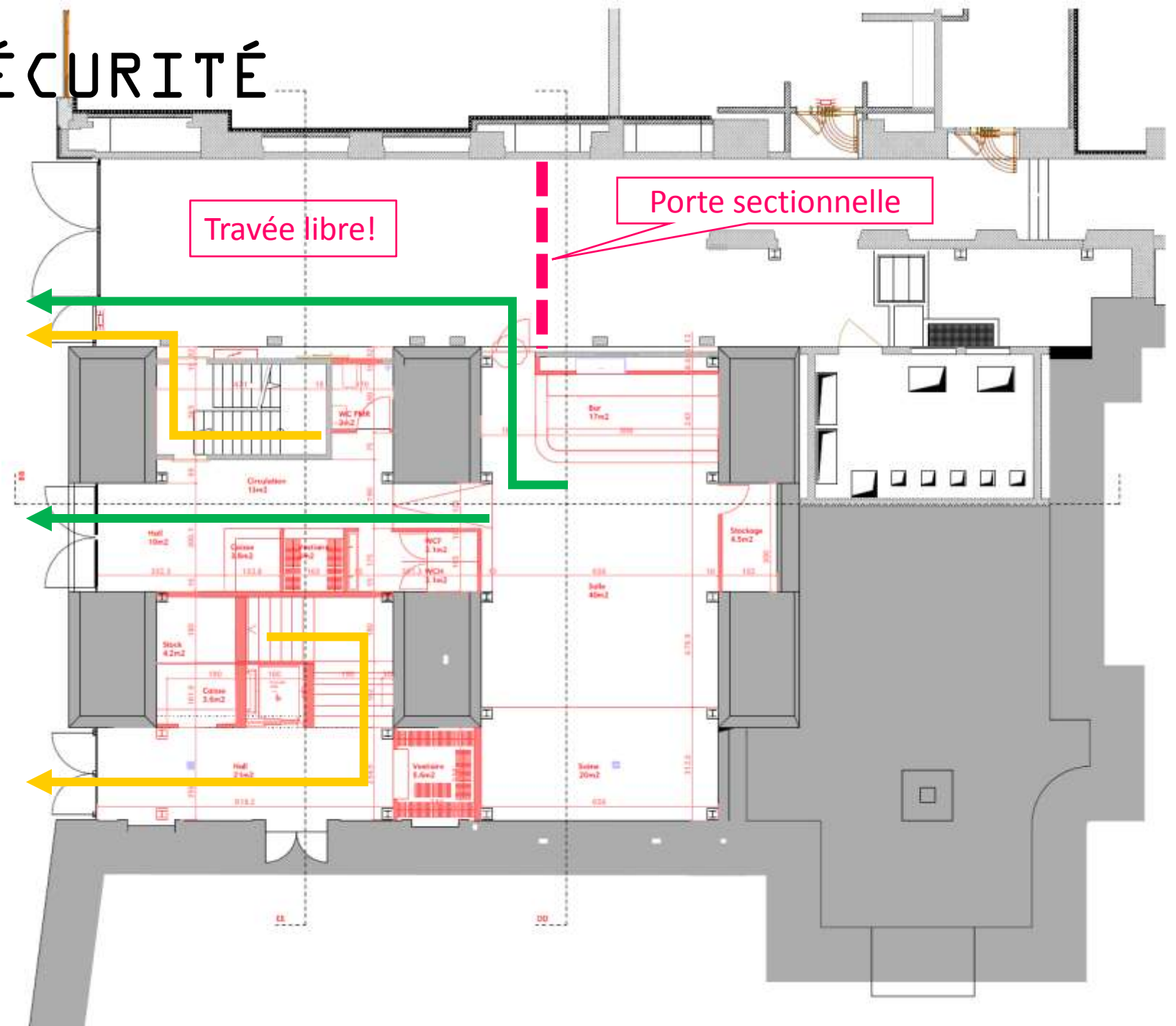


# COUPE TRANSVERSALE E-E



# CONCEPT SÉCURITÉ

ISI



# CONCEPT SÉCURITÉ

ISI

